



SINGLE HOLE FLOW STOPPING EQUIPMENT

- QUALIFIES FOR ADDITIONAL REVENUE OPPORTUNITIES UNDER RIIO
- SAVES OVER 1/3 ON EXCAVATION WORKS
- ENVIRONMENTAL BENEFITS
- DELIVERS SAFETY BENEFITS
- A NATURAL EXTENSION TO THE WASK RANGE



FROM MAINS TO METER

CRANE

BUILDING SERVICES & UTILITIES

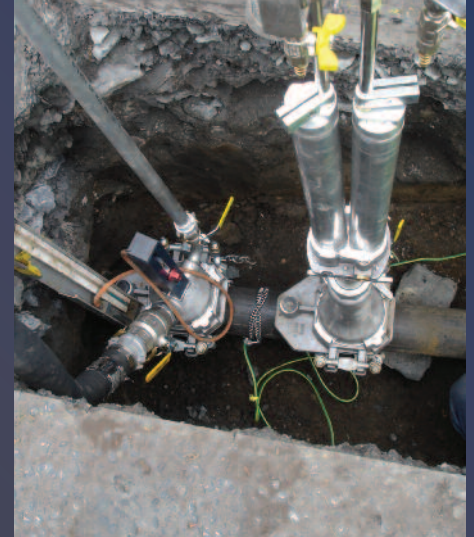
SINGLE HOLE FLOW STOPPING EQUIPMENT

NEW WASK EQUIPMENT PROVIDES BENEFITS ALIGNED WITH RIO OBJECTIVES.

RIIO is a mandatory framework established by the regulator (OFGEM) which will drive gas industry changes over the next 8 years.

Benefits of Single Hole Flow Stopping

- Qualifies for Gas companies to earn additional revenue under RIIO
- Saves over 1/3 of current excavation works.
- Delivers environmental benefits – less excavation, less waste to landfill, less backfill material.
- Delivers safety benefits – less chance of cable strikes.
- A natural extension to the WASK range and works with existing WASK Teeset bases and ancillary equipment in the field.



TYPICAL SET UP AND NEW 2 BAG DEPLOYMENT SYSTEM



TYPICAL FLOW STOPPING SYSTEM WITH BYPASS



TWO-BAG DEPLOYMENT



In addition to cost savings, single hole bagging has environmental (less excavation/waste to landfill/backfill material) and safety benefits (less excavation = less chance of cable strikes to operatives)

FOLLOWING EXTENSIVE FIELD TRIALS THE SYSTEM IS NOW FULLY APPROVED FOR USE ON THE GAS NETWORK

PARTS LIST



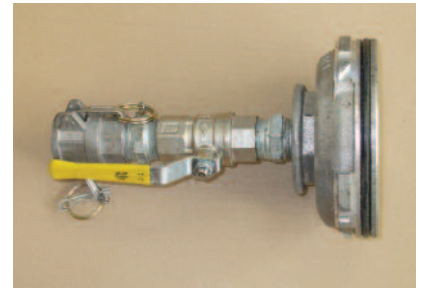
BAG CANOPY - EA0356



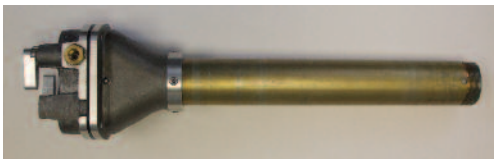
CONTROL HEAD
RH - EA0362



CONTROL HEAD
LH - EA0370



VENT HEAD - EA0363



VALVE BODY - EA0360



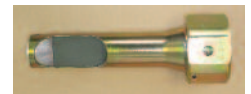
4" BAG
AC0317



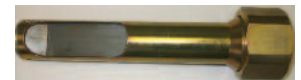
6" BAG
AC0318



8" BAG
AC0319



4" NOSE - EA0357



6" NOSE - EA0358



8" NOSE - EA0359



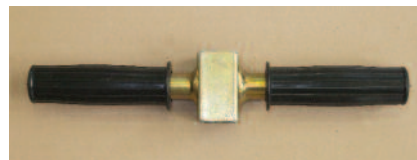
41 A/F SPANNER - JC0926



16 A/F SPANNER - JC0527



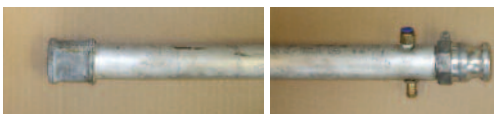
FLAME
TRAP
EA0261



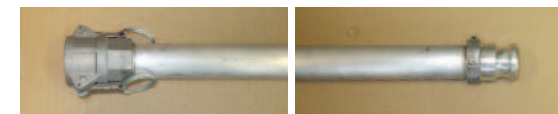
LAUNCH HANDLE - EA0361



SPATULA - EA0365



UPPER VENT TUBE - EA0259



LOWER VENT TUBE - EA0258



5 A/F HEX - JC0408



UPPER BAG TUBE - EA0361

METHOD OF WORKING

STATION POSITIONS

STATION NO. 1: UPSTREAM BYPASS

STATION NO. 2: UPSTREAM PRIMARY
UPSTREAM SECONDARY

STATION NO. 3: DOWNSTREAM SECONDARY
DOWNSTREAM PRIMARY

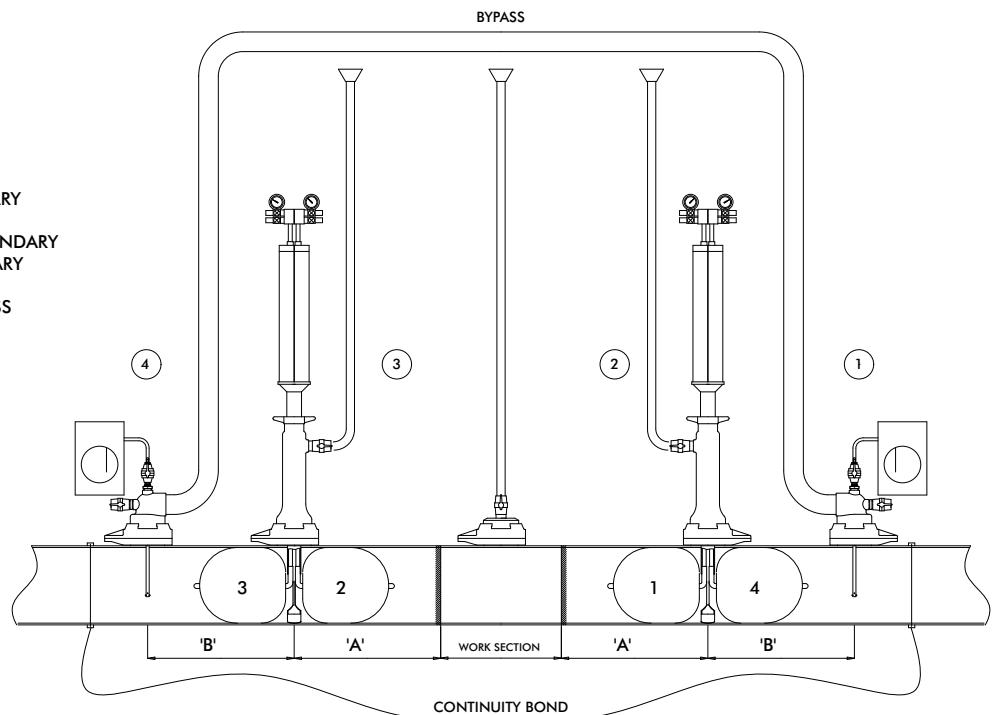
STATION NO. 4: DOWNSTREAM BYPASS

BAG INSERTION SEQUENCE:

1. BAG 1
2. BAG 2
3. BAG 3
4. BAG 4

BAG REMOVAL SEQUENCE:

1. BAG 1
2. BAG 2
3. BAG 3
4. BAG 4



PIPE SIZE		DIM 'A'		DIM 'B'		TAPPING SIZE	MAX MAINS PRESSURE		BAG INFLATION PRESSURE	
INS	MM	INS	MM	INS	MM	BSP	PSI	MBAR	PSI	MBAR
4	100	16	400	16	400	1 1/4"	5	350	10	700
6	150	18	450	18	450	1 1/2"	4	300	8	600
8	200	20	500	20	500	2"	4	300	8	600



46-48 WILBURY WAY, HITCHIN,
HERTFORDSHIRE, SG4 0UD

TELEPHONE: +44 (0)1462 443225

FAX: +44 (0)1462 443311

EMAIL: sales@wask-uk.com

www.wask-uk.com



FM00311
ISO 9001



To visit our Video Library go to:
www.youtube.com/user/CraneBSU



- Designed and manufactured under quality management systems in accordance with BS EN ISO 9001:2008

Every effort has been made to ensure that the information contained in this publication is accurate at the time of publishing. Crane Ltd assumes no responsibility or liability for typographical errors or omissions or for any misinterpretation of the information within the publication and reserves the right to change without notice.

W_SHFSE_0215



CRANE BUILDING SERVICES & UTILITIES

www.cranesbu.com